

# ERA

design ► supply ► deliver ► install

# Universal Office Solutions

## Era



Task seating



Soft seating



Cigarette & Match



SBI



Washable



Bleach cleanable



Acoustic



Year guarantee



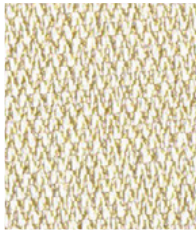
Curtains



Medium Hazard

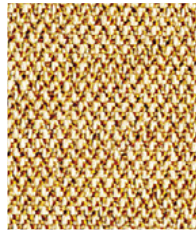


IMO FTP Code (Part 8)



**Transition**

CSE30



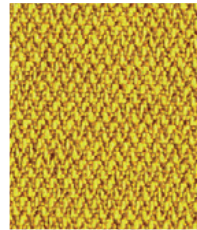
**Splitsecond**

CSE31



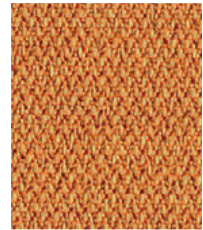
**Lifetime**

CSE03



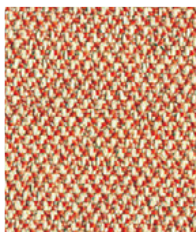
**ccasion**

CSE32



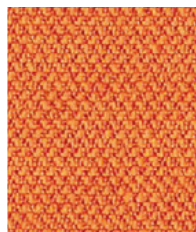
**Measure**

CSE27



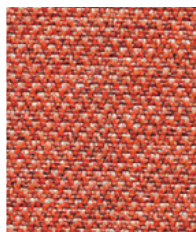
**Sequence**

CSE25



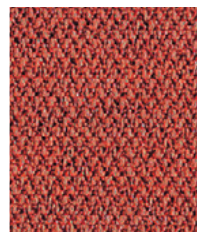
**Span**

CSE05



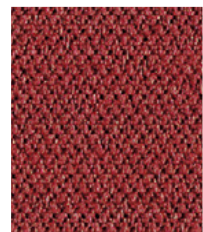
**Turn**

CSE26



**Eperience**

CSE29



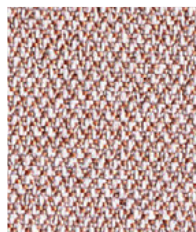
**Etent**

CSE28



**Calendar**

CSE19



**Data**

CSE24



**Cycle**

CSE06



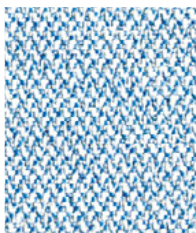
**Phase**

CSE17



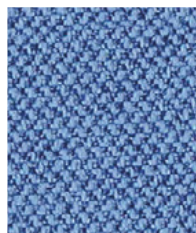
**Prime**

CSE09



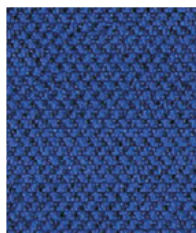
**Allowance**

CSE38



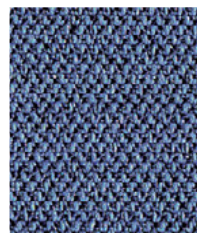
**Chapter**

CSE08



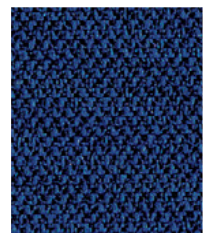
**Perennial**

CSE12



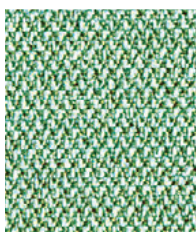
**Range**

CSE42



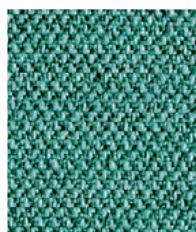
**Maturity**

CSE40



**Notation**

CSE36



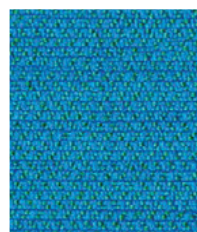
**Rest**

CSE37



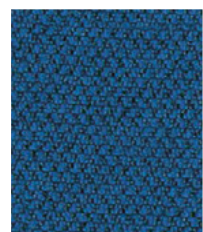
**Aeon**

CSE20



**Everlasting**

CSE10



**Stage**

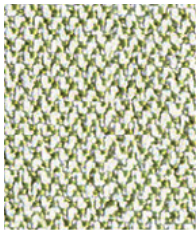
CSE15

Photographic fabric scans are not colour accurate. Always request actual fabric samples before ordering.

Sales: Tel: 01363 775411

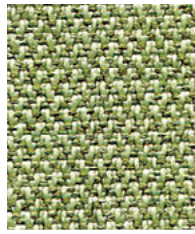
Email: [sales@uosltd.co.uk](mailto:sales@uosltd.co.uk)

[www.universalofficesolutions.co.uk](http://www.universalofficesolutions.co.uk)



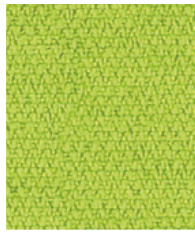
**Analogue**

CSE33



**Endurance**

CSE34



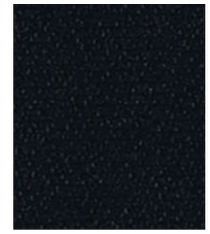
**Period**

CSE07



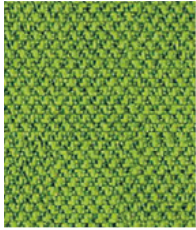
**Futurist**

CSE01



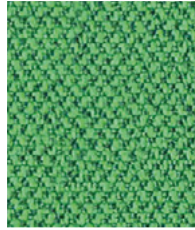
**Forward**

CSE14



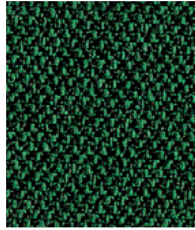
**Timelapse**

CSE16



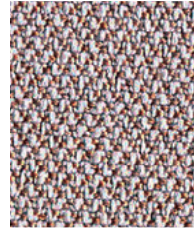
**Event**

CSE18



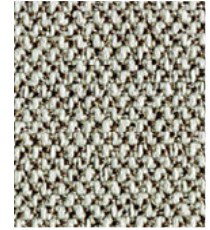
**Signature**

CSE35



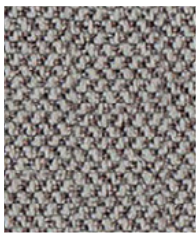
**Occurrence**

CSE23



**Prompt**

CSE45



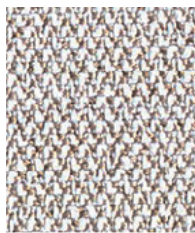
**Generation**

CSE02



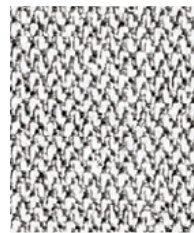
**History**

CSE21



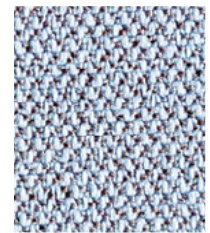
**Quota**

CSE41



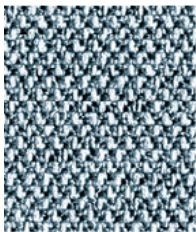
**Memo**

CSE46



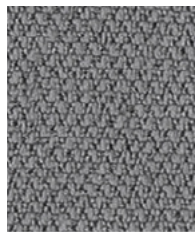
**Youth**

CSE39



**Late**

CSE43



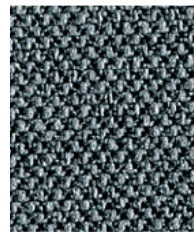
**Forecast**

CSE11



**Present**

CSE13



**Elapse**

CSE44

## Technical information

### Composition

100% Polyester

### Environment

Certified to STANDARD 100 By OEKO-TEX®  
Certified to Indoor Advantage™ Gold  
Environmental Product Declaration - Synthetic fabric composition  
Non metallic dyestuffs

### Width

140 cm minimum

### Weight

320 g/m<sup>2</sup> ±5% (448 g/lin.m ±5%)

### Abrasion Resistance\*

Heavy duty / 10 year guarantee Independently certified to ≥100,000 Martindale cycles

### Flammability

EN 1021 - 1 (cigarette)  
EN 1021 - 2 (match)  
BS 7176 Low Hazard

EN 13501-1 Adhered Class B, s1, d0  
EN 13501-1 Un-adhered Class C, s1, d0  
California Technical Bulletin 117  
ASTM E84 Class 1 or A (Adhered)  
ASTM E84 Class 1 or A (Un-adhered)  
UL 723

### With Eco FR™:

BS 5852 Ignition Source 5  
BS 7176 Medium Hazard  
IMO FTP Code (Part 8)  
The Furniture and Furnishing (Fire Safety) Regulations 1988 (UK domestic cigarette and match)

### With FR Treatment (Gorts):

DIN 4102 B1  
BS 5867-2: Type B Curtains & Drapes  
EN 13773 Class 1 GB 8624 B1

*Note: Flammability performance is dependent on components used; full details are listed within our certificates. Customers must ensure their complete furniture meets the necessary standards.*

### Light Fastness

5 (ISO 105 - B02)

### Fastness to Rubbing

Wet: 4, Dry: 4 (ISO 105 - X12)

### Acoustic Properties

Acoustically transparent, acoustic graphs available upon request.

### Bleach Cleanable

ISO 105 E03 colour change 4 for dilution factor 1:4 chlorine solution

### Cleaning

Vacuum regularly. Wipe with a damp cloth using a proprietary upholstery shampoo/soap. For deeper cleaning use steam, bleach, alcohol or professionally dry clean. Can be washed at 60°C. Full details can be found in our cleaning and disinfection guide.

\*Results from abrasion testing are highly variable and are therefore not a reliable indicator of the wear performance of the fabric. All independent certification is supported by a 10 year durability guarantee. Internally we specify this product at >80,000 cycles which we believe is realistic for repeatability of testing. The stated technical and environmental performance of a fabric may be affected by the post treatment applied. Product guarantees for the post treatment of fabrics undertaken by Camira are guaranteed for 5 years. Please note that seam performance is dependent on seam construction, needle and thread type. We recommend that appropriate sewing advice be taken. Batch to batch shade variations may occur within commercial tolerances. We reserve the right to alter technical specifications without notice. The Unregistered Design Rights and the Copyright in all designs are the exclusive property of Camira Fabrics Limited.

Photographic fabric scans are not colour accurate. Always request actual fabric samples before ordering.

**Sales:** Tel: 01363 775411

**Email:** sales@uosltd.co.uk

**www:** universalofficesolutions.co.uk